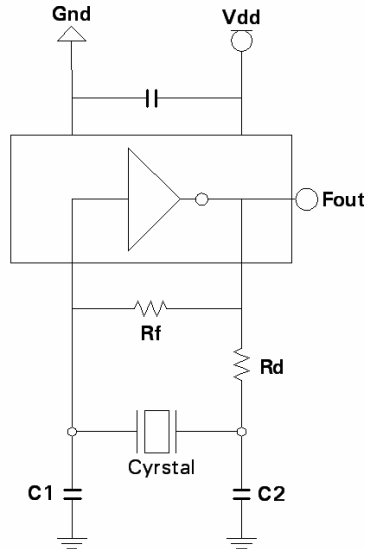


**CL Calculation of C-Mos Oscillator Circuits**



Typical Oscillator Circuit

The figure is typical C-MOS Oscillator Circuits. The load capacitance is the circuit equivalent capacitance looking the circuit system from the two wire leads of crystal. The operation frequency in the circuit is defined by load capacitance and crystal.

The below is Equation of CL Calculation.

- C1,C2 : Capacitor which is connected
- C stray: is a stray capacitance such as patterns and IC I/O capacitance. The value is about 5pF.

- $CL = \frac{C1 \times C2}{C1 + C2} + C_{stray}$

**For additional information, Pleas Contact**

**IMTECH Co., Ltd.**  
**4F, Sincere B/D, 332-34, Gocheon-Dong, Uiwang-City**  
**Kyunggi-Do, Korea.**  
**Tel 82-459-5197 Fax 82-31-459-5198**